

**Year 7**

**Essential**

**Information Evening**

**COMPASSION**  
**ACHIEVEMENT**  
**RESPECT**  
**ENDEAVOUR**

The cornerstones of our  
learning community



**IMBERHORNE SCHOOL**

# Speakers

- **Mr Martin Brown**  
Headteacher
- **Mr Alex Melmoe**  
Network Manager
- **Mr Dan Celani**  
Head of Year
- **Mrs Heather Timson**  
Assistant Headteacher



# Expectations

- Personal organisation and good habits
- Development of character
- Participation



# Independent Learning

- Remote Access
  - Full access to school system – all files & software
- Foldr
  - Access to school files
- Outlook Web Access
  - Calendar and E-Mail
- ActiveSync
  - Calendar and E-mail on Mobile Devices





# IMBERHORNE SCHOOL

Compassion  
Achievement  
Respect  
Endeavour  
*The cornerstones of our  
learning community*

- Home
- About Us
- Dates
- News
- Parents
- Students**
- Our Curriculum
- Sixth Form
- Recruitment
- Contact Us

- Canteen
- Careers and Futures  
Guidance
- Clubs and Activities
- Duke of Edinburgh  
Award
- eSafety Advice
- Library and Learning  
Resource Centre
- Online Services**
- Personal Support
- Revision
- Reward and  
Recognition
- Work Experience

## Open Evening 2018

Thur 27th Sep 5.00 - 8.00pm

Join us on this evening to meet our students and staff. We look forward to welcoming you! Presentations will be at our Imberhorne Lane site at 5.30pm, 6.15pm and 7.00pm.

**Open Mornings - We are pleased to hold school tours during the normal school day, week commencing 1st October, by appointment with reception on 01342 323562.**

Search our site



Crowned at the Castle

Staff and Pick Up

Week

**3A**

17th - 21st

The Week Ahead



IMBERHORNE SCHOOL



## Outlook Web Access

Gives access to your e-mail, calendar and contacts - faster than logging into Remote Access if you only need to check one of these.

Students can find their homework and timetable in their calendar.

**Login Details to Use:** Normal school network username and password.

**Targeted Users:** Staff

Students

Governors

[Login to Outlook Web Access](#)



## Office 365

Gives access to online versions of Office programs and documents stored on OneDrive. Also allows staff and students to download a free copy of Office365 ProPlus to install on their own computers.

**Login Details to Use:**

School e-mail address and normal school network password. School e-mail addresses are your normal network username followed by @imberhorne.co.uk, i.e. [012345@imberhorne.co.uk](mailto:012345@imberhorne.co.uk) for students or [aother@imberhorne.co.uk](mailto:aother@imberhorne.co.uk) for staff.

**Targeted Users:** Staff

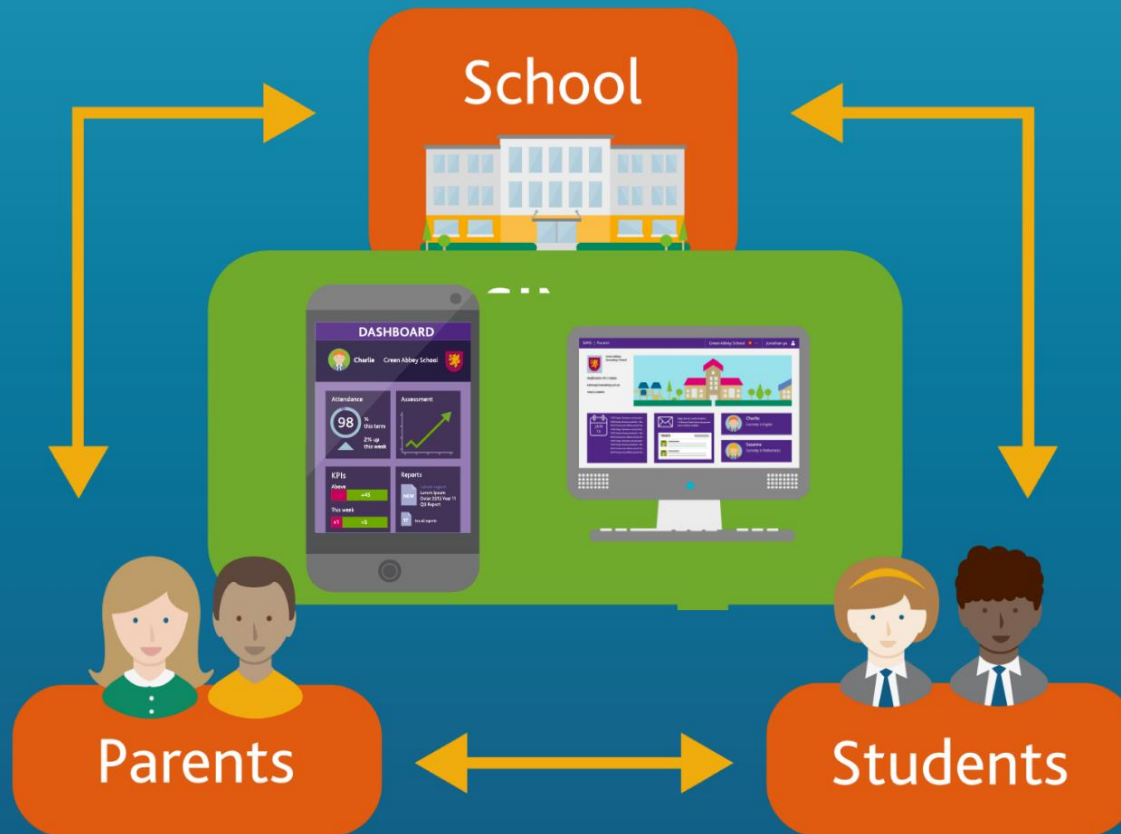
Students

[Login to Office 365](#)



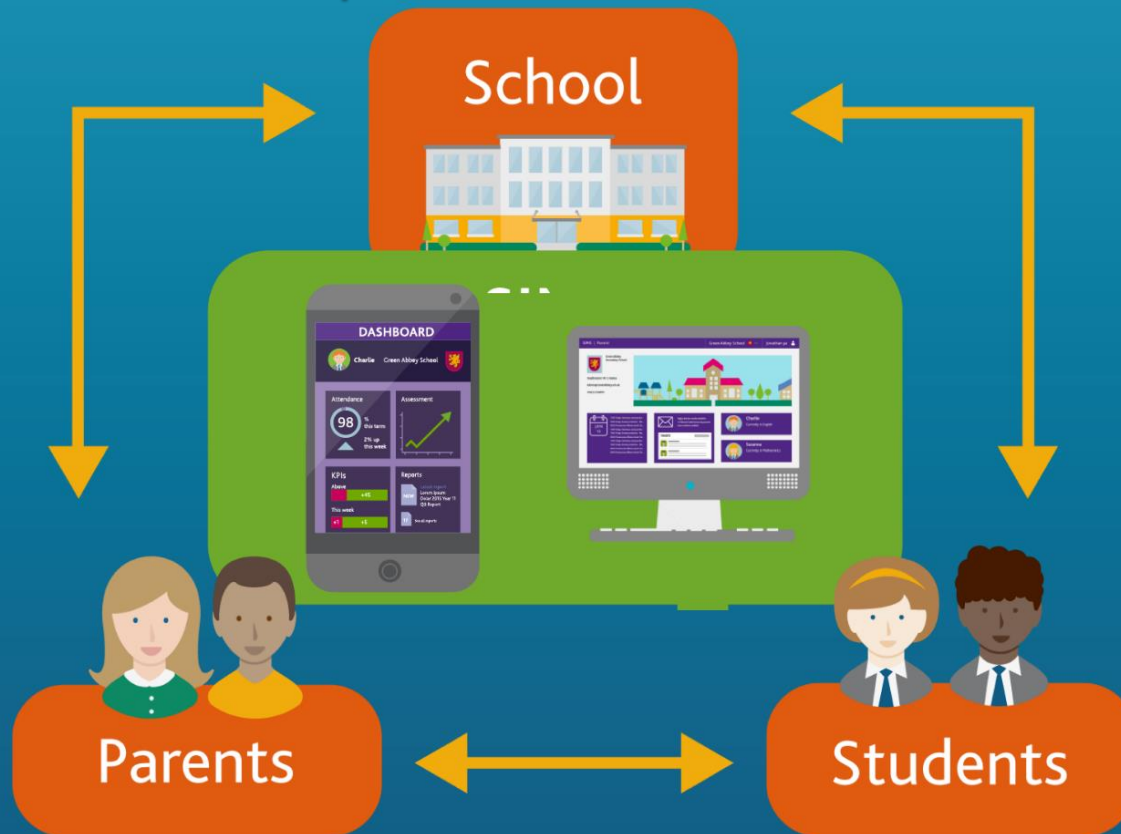
# SIMS Parent

View Homework, Achievements, Behaviour, Attendance & more



# SIMS Parent

Complete “Data Collection” section  
To check/update Contact Details





Browser tabs: Product Admin, SIMS Parent

Address bar: https://www.sims-parent.co.uk/#/sch

Page Header: SIMS | Parent, Imberhorne School, Sign Out

Navigation: Home, School Details, Messages, Calendar, Ben

**Attendance**  
100  
% this term  
3 / 3 this week

**Conduct Achievements**  
9  
▲ 1 this week  
**Behaviour**  
No incidents this year

**Assessment**  
★

**Homework**  
3  
pieces set

**Timetable**  
📅

**Reports**  
📄  
No data available

Due  Handed In Refresh

Today 19th September 2017

**Art - Take 12 photographs**  
Set by Mrs A P HAYDEN on 12th September 2017

Thursday 5th October 2017

**Geography - Young Geographer of the y...**  
Set by Mrs C E HEALEY on 18th September 2017

Friday 13th October 2017

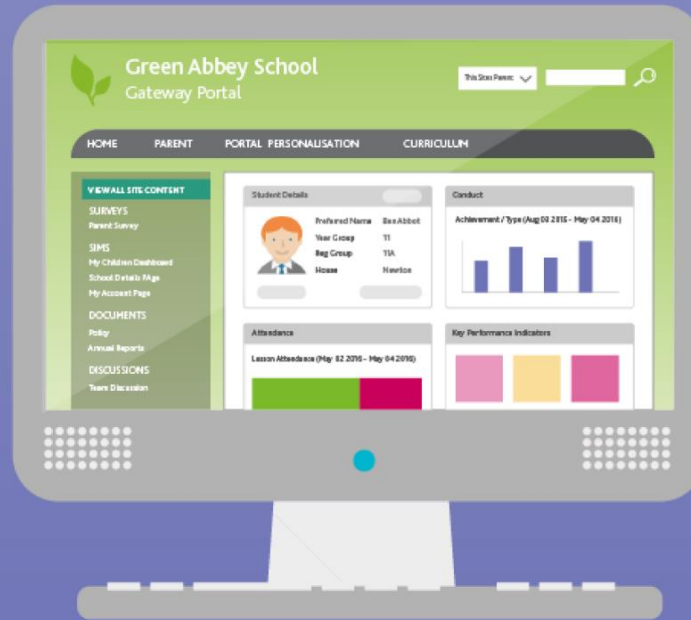
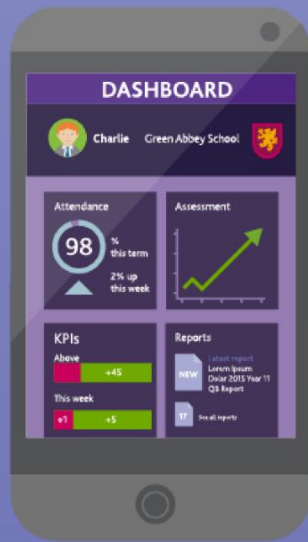
**Technology - INDEPENDENT LEARNING...**  
Set by Ms C A JORDAN on 13th September 2017

Privacy Policy

100%



# Use the free SIMS Parent App or view online



We sent you an  
activation e-mail  
earlier this evening

Click the link in the  
e-mail  
to activate



# Sign in with an existing account

## Choose Account Type

Continue by choosing your existing account type



Sign in with SIMS ID



Sign in with Twitter



Sign in with Google



Sign in with Microsoft



Sign in with Facebook



Sign in with Microsoft



# If you don't have any of these, you'll need to create one

## Choose Account Type

Continue by choosing your existing account type



Sign in with SIMS ID



Sign in with Twitter



Sign in with Google



Sign in with Microsoft



Sign in with Facebook



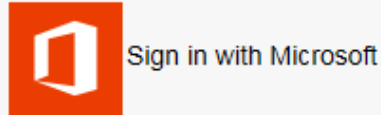
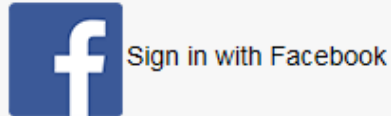
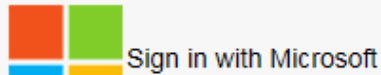
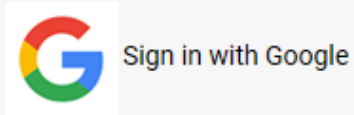
Sign in with Microsoft



# Ignore the SIMS ID Option:

## Choose Account Type

Continue by choosing your existing account type



# See a snapshot of school life



# Assessment and Marking

- At Imberhorne, we use a 'Flight Paths' approach to assessment at KS3
- This means that our focus as teachers is on the long-term goal of preparing students for success at GCSE and beyond.





# Flight Paths

- Students in Year 7 will be placed on one of four flight paths for each subject
- This is based on the data the school holds on each student and helps us identify their likely future attainment



# Flight Paths

- In the first term, departments will complete a number of assessments to ensure students have been placed on the correct Flight Path for each subject.
- Marking in books would be on the basis of the arrows.
  - ✓ Above their Flight Path expectation: ↑
  - ✓ On their Flight Path expectation: ↔
  - ✓ Under their Flight Path expectation: ↓



# Flight Paths

- In January we will send you a letter which will explain the system in more detail and confirm the Flight Path for each student in each subject.
- Departments will continue to monitor the students' progress and move the students between Flight Paths where applicable across KS3.



# Pastoral Support

- Head of Year & Pastoral Support
- Becoming more independent
- Non-uniform days
- Personal Development lessons



# Attitudes to Learning

- Learning Attitudes
- Quality of Work
- Working Independently
- Feedback in reports/SIMs online



## Outstanding

Praise e-mails, Imberstar nomination for sustained performance.

### Learning Attitudes

- Shows a high level of **dedication and enthusiasm** in lessons.
- Willingly seeks 'next steps', takes risks to further their learning.
- Takes a major part in lessons and is a **good role model**
- Can take the lead for his/her own learning and give **support to others**.
- **Consistently on task**.
- Never needs to be reminded about expectations.

### Quality of Work

- **Dedicated** and strives to produce work which is over and above what is expected.
- **Works hard** to produce work and completes tasks to a high standard.
- Consistently makes very **good progress**.

### Working Independently

- Consistently produces homework of a standard above what is expected of them.
- **Seeks to further knowledge of topics** by participating in additional research.



# Homework Club

- Lunchtimes

Tuesday  
and  
Thursday

- Afterschool

Thursday



# Recognition – at Imberhorne we praise EFFORT

- Students collect **Achievement Points** for demonstrating praiseworthy activities and earn certificates
- Merit = 1 Achievement Point
- Praise e-mail = 3 Achievement Points
- Imberstar subject nomination (every half term) = 5 Achievement Points





**Stephen Smith is in Year 7 and has 90% attendance.**

**Is that good?  
What does this mean?**

- 1 week =  $\frac{1}{2}$  a day missed a week
- 1 year = 4 weeks of lessons
- 5 years =  $\frac{1}{2}$  a school year



# What impact might this have on Stephen's life.....?

Research suggests that

**17 missed school days** in a

year = 1 GCSE grade **DROP** in achievement. (DfE)

The greater the attendance –  
the greater the achievement



Attendance	5 or more A*-C including English and Maths 2015	5 or more A*-C including English and Maths 2016	5 or more 4+ including English and Maths 2017	5 or more 4+ including English and Maths <b>2018</b>
<b>95%+</b>	<b>80%</b>	<b>86%</b>	<b>80%</b>	<b>78%</b>
<b>90% - 94.9%</b>	<b>51%</b>	<b>68%</b>	<b>44%</b>	<b>65%</b>
<b>Less than 90%</b>	<b>14%</b>	<b>24%</b>	<b>25%</b>	<b>8%</b>



# Key Dates

- **Thursday 27<sup>th</sup> September 2018:** Open Evening (2.30pm finish)
- **Friday 28<sup>th</sup> September 2018:** Inset day
- **Tuesday 6<sup>th</sup> & Wednesday 7<sup>th</sup> November 2018:**  
Year 7 Merit Assembly 9.00 AM start
- **Thursday 15<sup>th</sup> November 2018:**  
Year 7 Consultation 3.30pm – 7.30pm (2.30pm finish)
- **Friday 11<sup>th</sup> January 2019:** Flight Path Allocation
- **Wednesday 27<sup>th</sup> February 2019:** Progress Reports
- **Thursday 20<sup>th</sup> June 2019:** Strengths & Targets Reports

