



Year 12 Briefing Evening

Tuesday 17th September 2019





Meet the team

Glyn Crees

Head of Sixth Form



Victoria Nash

Deputy Head of Sixth Form



Sinead McCarthy *Deputy Head of Sixth Form*



Nicola Hooper

Sixth Form Futures Leader





Meet the team

Sadie Evans

Sixth Form Pastoral Support



Nancy Covill

Sixth Form Administrator



Leanie Kaleido

Library Supervisor Mon – Wed



Jacqui Spencer

Library Supervisor Thurs – Fri





Glyn Creeves

Head of Sixth Form

- *Sixth Form pathways*
- *Curriculum and timetables*
- *Target setting*
- *Monitoring progress and communication*
- *'The Change Curve'*
- *16-19 Bursary*

Pathway Options	Academic Entry Requirements	Post-16 courses available
Pathway 1 (1 year)	A minimum of three D grades at GCSE	Level 2 Btec in Business and Creative iMedia. Resit GCSE Maths + English Language if reqd
Pathway 2 (2 years)	5 x 9 - 4 GCSE grades mainly at grade 4/5	Three subjects mainly from applied/Btec courses + Maths/English Language GCSE
Pathway 3 (2 years)	7 x 9 - 4 GCSE grades mainly at grade 6 or above + Maths and English Language at Grade 4 or above	3 A-level courses (or combination with applied/Btec)

A level and BTEC options

A Level	BTEC
Art, Photography, Drama	Applied Science (Single)
Biology, Chemistry, Physics	Business (Single or Double)
Computer Science	Health & Social Care (Single)
Economics	Media (Single)
Electronics	Music (Single)
English Literature, English Language	Performing Arts (Double only)
German, Spanish, Italian	Sport & Exercise (Single or Double)
Geography, History	
Maths, Further Maths	
Politics, Psychology, Sociology	
Textiles	

Structure of Courses

- **GCE A Levels (A*-E)**
 - Terminal Exams at the end of Year 13 (June 2021)
- **BTECs (Single and Double)**
(Dist*, Dist, Merit, Pass)
 - 50% coursework, 50% exams during both years and at the end of Year Y13 depending on course.
 - These exams must be “passed” to be awarded the qualification

Target Setting and Reports

Term	Report Type	Approximate timings
1	Progress report and target setting	Published on 22nd November
	Consultation Evening	27th November (Y13s + "invited" Y12s)
2	Assessment week	13-17 th January
	Assessment reports	7th February
	Y12 Consultation evening	12 th March
3	Assessment "Mocks" week	15-19 th June
	End of Year results/reports	10 th July
	Parent meetings	Monday 13 th -17 th July

Band	BTEC (single)	BTEC (double)	A level
Alpha	Distinction*-Distinction	D*D*-DD	A*-B
Beta	Distinction-Merit	MM-DM	B-C
Gamma	Merit - Pass	PP-MP	C-D

In Year 12 we focus on successful study skills, work habits and approaches to independent learning

We report on three areas:

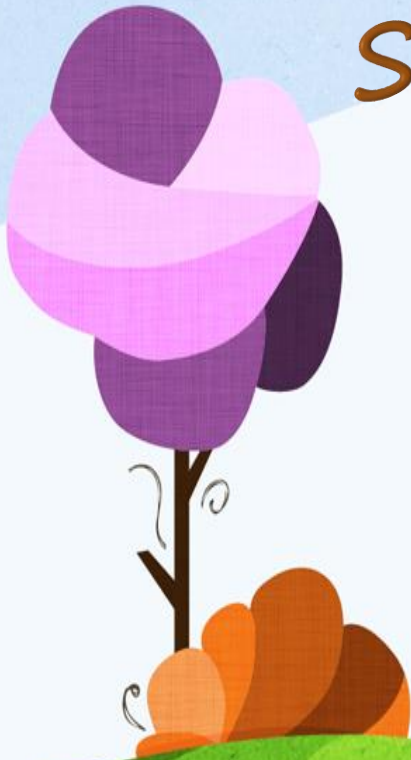
- Readiness for learning
- Engagement
- Independence

1-3 score

1= Outstanding, 2=Motivated, 3 = Requires improvement



Published via SIMS Parent app



The Change Curve



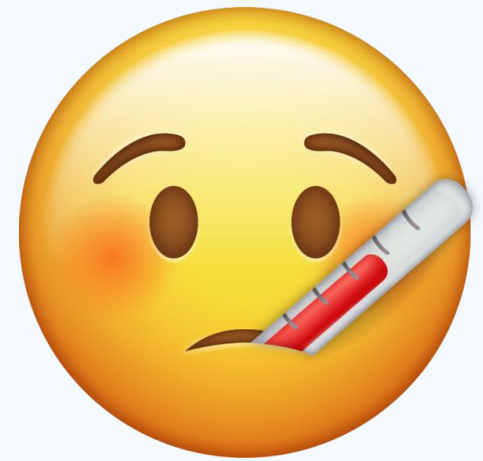


- *Ethos and Values*
- *Expectations*
- *Absences*
- *Dress code*
- *Assembly & PD program*
- *Personal mentors & leadership opportunities*

1. *Listening to music in lessons or around school corridors is not allowed*
2. *Mobile phones/headphones should not be on show around school corridors*
3. *No hats to be worn in KS4 areas or in lessons*
4. *No facial piercings /extreme hair colours*
5. *Common room – please use the bins provided*
6. *Food shouldn't be eaten around the school corridors*
7. *Hot food from the canteen should be eaten in the canteen*
8. *Hot food bought off site at lunch – please eat off site*

Absences

- Absences (parents/carers please call or email)
- 01342 310986
- Email: sixthform@imberhorne.co.uk
- Unwell in school? See Nancy



Sixth Form Dress Code

“Clothes appropriate
for a professional work
place”

Sixth Form Student Dress Code

STUDENT ID CARD AND GREEN LANYARD MUST BE WORN AT ALL TIMES

YES Please

- Smart tops/T-shirts
- Hoodies/jumpers/sweatshirts
- Dark thick leggings
- Smart jeans or trousers (no rips)
- Respectable shorts, skirts or dresses
- Sensible shoes, trainers or sandals

NO Thanks

- Facial piercings or visible tattoos
- Low cut tops or crop tops
- Ripped jeans
- Hoods up or hats in middle school and lessons
- Underwear on show
- Very short skirts/shorts/dresses
- Beachwear inc rubber flip-flops

The Role of the Personal Mentor

Weekly morning mentoring

Mentoring interviews

Checking progress

Personal matters

Reference writer

Leadership and Ambassador Opportunities

Young Enterprise	Y9 Challenge Trip (Summer 2020)
Debating Club	Open Evening Guides
Youth Speaks Competition	Football Team
Student Governor (x2)	Careers Office Advisors
Senior Student (x4)	School Magazine
Subject Ambassador in lessons	KS3 Weekly Sports Clubs
Talk Sense @ WL	KS3 Sports Day
KS3 Activities Week @ WL	





Futures Guidance

- Experienced Sixth Form team
- Futures guidance from personal mentors
- Unifrog website <https://www.unifrog.org/>
- Promotion of apprenticeship/job vacancies
- One-to-one futures interviews available with a professional advisor
- In-depth support for applications
- All starts in mid January 2020



Contact us

Absences & Sixth Form Direct Number:

01342 310986

sixthform@imberhorne.co.uk

Head of Sixth Form

gcrees@imberhorne.co.uk

Deputy Head of Sixth Form

vnash@imberhorne.co.uk

smccarthy@imberhorne.co.uk

Futures Leader

nhooper@imberhorne.co.uk

Pastoral Support

sevans@imberhorne.co.uk



Personal Mentors

12AHY

ahayden@imberhorne.co.uk

12AIB

aibrahim@imberhorne.co.uk

12ASI

asingleton@imberhorne.co.uk

12DMU

dmuchamore@imberhorne.co.uk

12LHU

lhutcheson@imberhorne.co.uk

12NBO

nbooth@imberhorne.co.uk

12NHU

nhughes@imberhorne.co.uk

12SKA

skay@imberhorne.co.uk